

Cochrane

User guide



peace
MED



What is in THE COCHRANE LIBRARY?

The Cochrane Library consists of seven databases and is used by a broad range of people interested in Evidence-Based health care, including consumers, clinicians, policy-makers, researchers, educators, students and others:

Cochrane Database of Systematic Reviews (Cochrane Reviews)

This is the primary output of **The Cochrane Collaboration**. Each Cochrane Review identifies an intervention for a specific disease (or other problem in health care) and determines whether or not this intervention works by summarising the results of research gathered from randomised controlled trials.

Database of Abstracts of Reviews of Effects (Other Reviews)

Database of Abstracts of Reviews of Effects (DARE) is a unique database, containing abstracts of systematic reviews that have been quality assessed. Each abstract includes a summary of the review together with a critical commentary about the overall quality. DARE contains more than 19,000 such abstracts. Produced by the Centre for Reviews and Dissemination (CRD) in York, UK.

Cochrane Central Register of Controlled Trials (Clinical Trials)

Known as CENTRAL, this database includes details of published trials taken from bibliographic databases and other published resources. CENTRAL includes the title of the article, information on where it was published and, in many cases, the abstract.

The Cochrane Methodology Register (Method Studies)

A bibliography of publications that report on methods used when conducting controlled trials, studies of methods used in reviews, and more general methodological studies which could be relevant to anyone preparing systematic reviews. Records include journal articles, books and conference proceedings.

Health Technology Assessment Database (Technology Assessments)

Details of completed and ongoing health technology assessments (studies of the medical, social, ethical and economic implications of healthcare interventions) from around the world. Produced by the CRD in York, UK.

The NHS Economic Evaluation Database (Economic Evaluations)

Economic evaluations from around the world, evaluated for quality and highlighting relative strengths and weaknesses of each study. Produced by the CRD in York, UK.

Go to www.thecochranelibrary.com
to discover this essential resource today



Getting Started

It is useful to register with Wiley Online Library, as it offers a number of benefits, and allows you to save searches. To register go to <http://wileyonlinelibrary.com/user-registration>

Following registration, an authentication e-mail will be sent to your e-mail address. **You must click the link in the message (within 24 hours) to validate your new login.** This will take you to the My Profile area, which includes your personal navigation bar. You are now logged onto Wiley Online Library and your name appears at the top of the screen.

Accessing THE COCHRANE LIBRARY

1 Go to the Search box, select Publication Titles, type Cochrane and press

2 Click on "The Cochrane Library" from the returned results

3 You are now on *The Cochrane Library* home page.

This is *The Cochrane Library* homepage. From here you can easily navigate around the whole site;

- Browse or search across all databases
- Read the latest editorial
- View the Special Collections
- Listen to new podcasts
- Access the Cochrane Journal Club



Basic Navigation

THE COCHRANE LIBRARY
Independent high-quality evidence for health care decision making

SEARCH THE COCHRANE LIBRARY
Title, Abstract or Keywords
[GO] Search for specific terms ACCESS HELP

BROWSE COCHRANE DATABASE OF SYSTEMATIC REVIEWS
Issue 7 of 12, July 2012

- Anaesthesia & pain control (198)
- Blood disorders (115)
- Cancer (391)
- Child health (1438)
- Complementary & alternative medicine (532)
- Consumer & communication strategies (48)
- Dentistry & oral health (129)
- Developmental, psychosocial, & learning problems (181)
- Ear, nose & throat (175)

Expand

COCHRANE CENTRAL REGISTER OF CONTROLLED TRIALS (CENTRAL)
Search for trials Issue 7 of 12, July 2012

SPECIAL COLLECTIONS
Avoiding unnecessary blood transfusion
Health protection and heatwaves: the need for systematic reviews

EDITORIAL
Health protection and heatwaves: the need for systematic reviews

COCHRANE JOURNAL CLUB
Join the discussion

COCHRANE METHODS
CLICK HERE

Podcasts from The Cochrane Library

HIGHLIGHTED NEW AND UPDATED COCHRANE REVIEWS
Vascular-endothelial-growth-factor (VEGF) targeting therapies for endocrine refractory or resistant metastatic breast cancer
Nicotine receptor partial agonists for smoking cessation
Mobile phone messaging reminders for attendance at healthcare appointments

There are several options to browse and search *The Cochrane Library* Databases.

You can browse all databases from the homepage, conduct a simple search or use the Advanced Search link to search by MeSH terms or to edit and combine searches.

Every page throughout *The Cochrane Library* has one of the below headers – from which you can navigate around the rest of the site, get to advanced searching, the homepage or save a search.

Sign-up: If you want to set up e-mail alerts for Wiley products, RSS feeds or save and edit your searches – follow this link

Help: For access to the search manual

SEARCH THE COCHRANE LIBRARY
Title, Abstract or Keywords
[GO] HOME SIGN UP LEARN ACCESS HELP

or try an [Advanced Search](#)

Learn: Find links to user guides and other useful information

Browse: Browse the complete *Library* by various criteria

Wiley Online Library home
THE COCHRANE LIBRARY
Independent high-quality evidence for health care decision making

COCHRANE REVIEWS
By Topic New Reviews Updated Reviews A-Z By Review Group

OTHER RESOURCES
Other Reviews Trials Methods Studies Technology Assessments Economic Evaluations

SEARCH
Title, Abstract or Keywords
Search > Medical Terms (MeSH) > Search Manager >

Click here to conduct a search, access saved searches, or to search by MeSH terms.



Use the links provided in the header to browse Cochrane Systematic Reviews by various criteria:

- By topic
- New Reviews (if you only want to view new Cochrane Reviews)
- Updated Reviews (if you want to check the updates on existing reviews)
- A-Z (by reviews/protocol or by review group)
- By Review Group (to see all the reviews written by a specific Cochrane Review Group)

Key to Review Status Buttons

All Reviews have a key to help readers quickly identify their status:

Review	A full review, complete with results and discussion, possibly including meta-analyses to combine results across studies.
Protocol	The outline of a review in preparation, including the background, rationale and methods.
Methodology	A full-text systematic review of methodological studies.
Diagnostic	A full-text systematic review of studies assessing accuracy of diagnostic tests.
Overview	An overview of multiple Cochrane intervention reviews addressing the effects of two or more potential interventions for a single condition or health problem.
New	A new protocol or review that has been published in the most recent issue.
Conclusions changed	There has been an important change to the conclusions of the review published in the most recent issue.
New search	A new search for studies has been conducted for an existing review as published in the most recent issue.
Major change	The protocol has been amended to reflect a change in scope published in the most recent issue.
Withdrawn	The review or protocol has been withdrawn, which may be because it was considered to be out of date. Reasons for withdrawal are specified in the document.
Comment	The review includes comments. Readers can submit comments, which are incorporated into the review together with answers and feedback from the review authors.



Navigate Your Way Around an Article

Use Database tools to add *The Cochrane Library* to your Saved Publications list in "My Profile" page

Links to Search, MeSH, and Search Manager tabs are available from every article in *The Cochrane Library*

Wiley Online Library Home
THE COCHRANE LIBRARY
 Independent high-quality evidence for health care decision making
 from [The Cochrane Collaboration](#)

Home > Evidence Based Medicine > Evidence-Based Medicine > The Cochrane Library > Abstract

DATABASE TOOLS
 Save to My Profile
 Recommend to Your Librarian

DATABASE MENU
 Database Home

FIND ARTICLES
 A-Z
 By Topic
 New Reviews
 Updated Reviews
 By Review Group

OTHER RESOURCES
 Other Reviews
 Trials
 Methods Studies
 Technology Assessments
 Economic Evaluations

SEARCH
 Title, Abstract or Keywords
 Search >
 Medical Terms (MeSH) >
 Search Manager >

ARTICLE TOOLS
 Save to My Profile
 Export Citation for this Article
 E-mail Link to this Article
 Submit Comments
 More Articles like this
 Request Permissions
 Share |

Exercise for pregnant women for preventing gestational diabetes mellitus
 Shanshan Han¹, Philippa Middleton, Caroline A Crowther
 Editorial Group: [Cochrane Pregnancy and Childbirth Group](#)
 Published Online: 11 JUL 2012
 Assessed as up-to-date: 17 APR 2012
 DOI: 10.1002/14651858.CD009021.pub2
 Copyright © 2012 The Cochrane Collaboration. Published by John Wiley & Sons, Ltd.

Additional Information ([Show All](#))
 How to Cite | [Author Information](#) | [Publication History](#)

Abstract | **Article** | Figures | Tables | References | Other Versions | Cited By

Summary (61K) | Standard (487K) | Full (558K)

Abstract tab includes Plain Language Summary

Background

Background

Jump to...
 Jump to...
 Top of page
 Background
 Objectives
 Methods
 Results
 Discussion
 Authors' conclusions
 Acknowledgements
 Data and analyses
 Appendices
 History
 Contributions of authors
 Declarations of interest
 Sources of support
 Differences between protocol and review

Description of the condition

Introduction and definition of gestational diabetes mellitus
 Although there is no universally accepted diagnostic criteria (Coustan 2010), gestational 'glucose intolerance or hyperglycaemia (high blood glucose concentration) with onset of Hoffman 1998; Metzger 1998; NICE 2008). GDM affects about 1% to 14% of pregnancies increasing in line with increasing rates of maternal obesity and type 2 diabetes mellitus.

Pathophysiology of gestational diabetes mellitus

Select to view author address information, how to cite, publication history and funding information

Search for articles by A-Z, By Topic, New Reviews, Updates Reviews, By Review Group

OTHER RESOURCES links to other Cochrane databases

Save or print a PDF of the full text article

"Jump to..." navigation allows quick access to specific sections of the article

More content like this
 Topics: **Gestational diabetes**

At the bottom of each article you will find links to related content



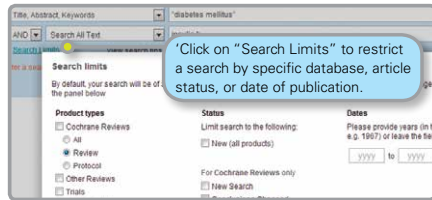
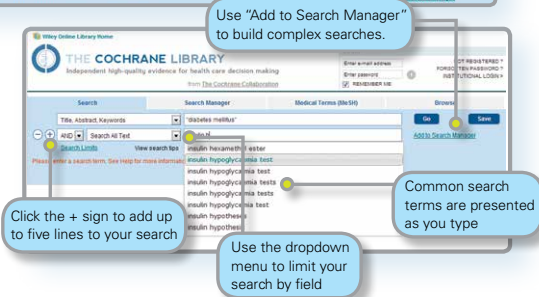
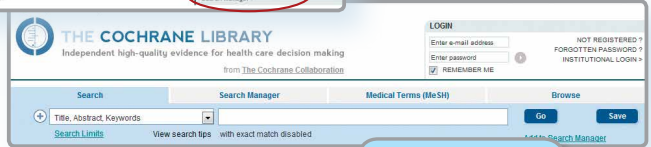
Advanced Searching

To access a variety of search options, click on Search, Medical Terms (MeSH), or Search Manager to be directed to the appropriate search tab.



In the search tabs, you can use the asterisk, double quotation marks and boolean operators (AND, OR, NOT) to refine or broaden your search.

You can also limit your search to specific fields such as Full text, Title, Author, Abstract or Keywords.



You can refine your search by selecting the databases you would like to search. Select one or more titles by clicking the boxes.

Search Manager



- Use this button to add or edit a MeSH search term using the Search Manager
- Use this option to view a print-friendly copy of your search with counts
- Click on the line count to view the results for that search line
- Use this button to apply search limits to a search line
- Click here to find search lines not used in your final search
- Use this area for naming and saving your searches. Saved searches will appear below in a strategy library.

Use the search manager to create complex search strategies.



Search Results

Wiley Online Library Home

THE COCHRANE LIBRARY
Independent high-quality evidence for health care decision making

LOGIN
 Enter e-mail address
 Enter password
 REMEMBER ME
 NOT REGISTERED? FORGOTTEN PASSWORD? INSTITUTIONAL LOGIN?

Toggle between results listed for the different databases in *The Cochrane Library*

Medical Terms (MeSH) Browse

Title, Abstract, Keywords Go Save

Search Limits View search tips with exact match disabled There are 25 results per page; go to more results using these links

There are 124 results from 7386 records for your search on 'diabetes mellitus in title abstract keywords in Cochrane Reviews'

Pages 1 - 25 | 26 - 50 | 51 - 75 | 76 - 100 | 101 - 124

Sort by Relevance

Use the dropdown menu to sort your results alphabetically, by date, or by relevance

Click on the title to view the article

Cochrane Reviews (124)
 All
 Review
 Protocol
 Other Reviews (469)
 Trials (14121)
 Methods Studies (37)
 Technology Assessments (266)
 Economic Evaluations (381)
 Cochrane Groups (0)

All
 Current Issue

Me Methodology
 Dg Diagnostic
 Ov Overview
 Cc Conclusions
 Ns New searches

Oral anti-diabetic agents for women with pre-existing diabetes mellitus impaired glucose tolerance or previous gestational diabetes mellitus
 Joanna Tieu, Suzette Coat, William Hague and Philippa Middleton
 February 2011

Ayurvedic treatments for diabetes mellitus
 Kalpana Sridharan, Roshni Mohan, Sridharan Ramaratnam and Deepak Panneerselvam
 December 2011

Hormonal versus non-hormonal contraceptives in women with diabetes mellitus type 1 and 2
 Jantien Visser, Marieke Snel and Huo AAM Van Vliet
 April 2009

An overview of multiple Cochrane intervention reviews addressing the effects of two or more potential interventions for a single condition or health problem
 low glycaemic load, diets for diabetes mellitus
 Beth J Elliott
 July 2009

Status labels are displayed in a legend with "roll over" tool tips

The number in brackets indicates the number of records that match your search in each database. From the search results click on the article title to view.

Strategy Library

The Strategy Library allows you to manage and view searches you have previously saved.

▼ Strategy Library (104)

Name	Last saved	Alerts
1 Diabetes Mellitus revised - With additional synonyms	12/03/2013 15:36	<input type="checkbox"/>
2 Child filter	12/03/2013 15:35	<input type="checkbox"/>
3 Diabetes mellitus	12/03/2013 15:34	<input type="checkbox"/>
4 Diabetic treatments	12/03/2013 15:34	<input checked="" type="checkbox"/>
5 Diabetic complications	12/03/2013 15:34	<input type="checkbox"/>

Click the column headings to sort your search by name or date saved

Check this box to receive an e-mail when new articles are retrieved by your search strategy

Load a saved search

Add a saved search onto the end of your existing search.

Export to print or view a copy of your search without line counts

Share your saved search via an e-mail link



MeSH Searching

To reach the MeSH search page simply click on the appropriate tab.

Wiley Online Library Home
THE COCHRANE LIBRARY
 Independent high-quality evidence for health care decision making
 from The Cochrane Collaboration

Search | **Search Manager** | **Medical Terms (MeSH)** | **Browse**

Search: "Diabetes Mellitus"
 View MeSH search tips

LOGIN
 Enter e-mail address [] NOT REGISTERED ?
 Enter password [] FORGOTTEN PASSWORD ?
 REMEMBER ME INSTITUTIONAL LOGIN >

Abnormalities - AB
 Administration & dosage - AD
 Adverse effects - AE
 Agonists - AG
 Analogs & derivatives - AA
 Analysis - AN
 Anatomy & histology - AH

Use this box to limit by qualifiers.

When a MeSH term is selected, valid qualifiers for that term appear as options in the dropdown menu.

Search in all trees or specific trees with or without term explosion.

Use this area to add a Mesh Search to Search Manager, view your results, or save an individual MeSH search.

Search: Diabetes Mellitus | Selected subheadings / qualifiers [] | **Lookup**

View MeSH search tips

Definition
 Diabetes Mellitus - A heterogeneous group of disorders characterized by HYPERGLYCEMIA and GLUCOSE INTOLERANCE.

Thesaurus matches

Exact Term Match
 Diabetes Mellitus

Phrase Matches
 Diabetes Mellitus, Experimental
 Synonyms: Experimental Diabetes Mellitus; Streptozotocin Diabetes; Diabetes; Streptozotocin; Streptozotocin Diabetes; Diabetes; Streptozocin; Alloxan Diabetes; Diabetes; Alloxan.

Diabetes Mellitus, Type 1
 Synonyms: Diabetes Mellitus, Insulin-Dependent; Diabetes Mellitus, Insulin-Dependent; Insulin-Dependent Diabetes Mellitus; Diabetes Mellitus, Juvenile-Onset; Diabetes Mellitus, Juvenile-Onset; Juvenile-Onset Diabetes Mellitus; Type 1 Diabetes Mellitus; Diabetes Mellitus, Sudden-Onset; Diabetes Mellitus, Sudden-Onset; Sudden-Onset Diabetes; Sudden-Onset Diabetes Mellitus; Diabetes Mellitus, Type I; Diabetes Mellitus, Brittle; Brittle Diabetes Mellitus; Diabetes Mellitus, Ketosis-Prone.

MeSH trees
 MeSH term - Diabetes Mellitus
 Explode all trees
 MeSH term only
 Explode selected trees
 Use the checkboxes next to each tree to explode selected trees
 Tree Number 1
 Nutritional and Metabolic Diseases [+2]
 Metabolic Diseases [+17]
 Glucose Metabolism Disorders [+5]
 Diabetes Mellitus [+7]
 Diabetes Mellitus, Experimental
 Diabetes Mellitus, Type 1 [+1]
 Diabetes Mellitus, Type 2 [+1]
 Prediabetic State
 Diabetes, Gestational
 Diabetic Ketoacidosis
 Donohue Syndrome
 Glycosuria [+1]
 Hyperglycemia [+1]
 Hypoinsulinism [+2]

Search results
 There are 13722 results for your search on
 • MeSH descriptor [Diabetes Mellitus]
 • explode all trees

Save search | **Add to Search Manager**

Cochrane Reviews 106
 Other Reviews 598
 Trials 12233
 Methods Studies 0
 Technology Assessments 310
 Economic Evaluations 475
 Cochrane Groups 0

View Results

What Sources in *The Cochrane Library* have MeSH Indexing

Cochrane Reviews	Fully indexed. NEW reviews are indexed within 6 months of being published.
Cochrane Protocols	No MeSH Indexing
Trials	Medline articles: Fully Indexed EMBASE and Handsearch: No MeSH indexing
Other Reviews	Fully Indexed
Technology Assessments	Fully Indexed
Economic Evaluations	Fully Indexed

MeSH is the U.S. National Library of Medicine's controlled vocabulary used for indexing articles for MEDLINE and PubMed. MeSH terminology provides a consistent way to retrieve information that may use different terminology for the same concepts (see <http://www.ncbi.nlm.nih.gov/pubmed/>).

Keywords drawn from the MeSH Thesaurus, published by National Library of Medicine, have been attached to many, but not all of the records in *The Cochrane Library*.



Search Syntax

How to search for	Example	Use
Automatic stemming and Term Variations	clear tumor mouse run	The search system performs automatic stemming of the term(s) by searching all common variants of a term based on its part of speech, eliminating the need for users to manually type these common variants. Semantic variants: clear finds clear, clears, cleared, clearing, clearer, clearest Common British vs. American spelling variants: tumor also finds tumour Non-standard plural variants: mouse also finds mice Common irregular verbs: run also finds ran, runs, running Automatic stemming can be shut off by putting the term in quotes and selecting "without word variations searched" in search limits
Single term	Cloning	Searches for specific term in article or selected fields
Multiple words	diabetes mellitus	If no quotes are used, search will "AND" terms and find articles or selected fields with both terms.
Phrase Searching	"diabetes mellitus" hearing NEXT aid*	Use quotes to find exact phrases. This search finds "diabetes mellitus" in the article or selected fields. If using wildcards, use NEXT. Phrase search doesn't support wildcards
Wildcard (or truncation)	transplant*	Use an asterisk (*) to match all terms beginning with a word root. transplant* finds transplant, transplants, transplanting, transplantation, and transplantable.
Word root must be at least 3 characters.	*glycemia	Use an asterisk (*) at the beginning of a word to match terms with the same suffix. *glycemia matches hyperglycemia or hypoglycemia .
	leuk*mia	Use an asterisk to match multiple characters within a word. leuk*mia finds leukemia and leukaemia
	wom?n	Use a question mark (?) to match a single character within a word. wom?n finds women or woman
	system?	Use a question mark to match all terms beginning with the word root + 1 additional character. System? Matches system and systems but not systematic or systemic.
Searching with Field Labels	"lung cancer":ti (hearing next aid*):kw smithau (cancer near lung):ti,ab,kw	On Search Manager Tab, limit to specific fields using the following field labels: :ti (Title) :ab (Abstract) :kw (Keywords) :au (Author) :so (Source) :pt (Publication Type) :tb (Tables) :doi (Digital Object Identifier - DOI) If NO field label is used, "All text" will be searched. To search multiple fields, separate field labels using commas (ti,ab,kw)
Logical operators in phrases	"Food and Drug Administration"	To find phrases which contain a logical operators (and, or, not)

Support for Logical (Boolean) Operators

The following operators can be used via the pull-down boxes in the search tab, or typed directly into the search boxes in either the search or search manager tabs.

Operator	Example	Use
AND	leg AND ulcer	Both terms MUST appear in the article or selected field(s).
OR	heart OR cardiac	At least one of the terms must appear in the article or selected field(s)
NOT	aids NOT hearing	The first word must appear but the second word cannot appear in the article or selected field(s)
ORDER OF PRECEDENCE	kidney OR renal and dialysis	If your search contains more than one logical operators, the system will execute the search in the following order: All NOT operations first, all AND operations second, All OR operations last. For better precision, use nesting
Grouping (or nesting)	(kidney OR renal) AND dialysis	Default precedence order can be changed by using parentheses () to explicitly group searches using logical operators.
Combining Searches	#1 or #2 or #3 (#1 or #2) and #3 {AND #1-#4} {OR #1-4, #7, #9}	Combine results from multiple search lines into a combined result set. Supports Boolean (AND, OR, NOT) and nesting. Precedence rules are applied if not explicitly given through nesting. Searches can also be combined using a range of lines, (AND #1-#4). Range searching can be used with "AND" or "OR" operators and must be enclosed in {}.
Proximity	NEAR cancer near lung	Terms can appear in either order. Finds "lung cancer" and "cancer of the lung" NEAR automatically defaults to near/6 (within 6 words).
	NEAR/x cancer near/2 lung	Terms can appear in either order. User can decide number of terms using the near/x command where x = the maximum number of words between search terms.
	NEXT lung next cancer hearing next aid*	Terms must appear in order keyed and assumes terms are next to each other. <i>lung next cancer finds lung cancer but not cancer of the lung</i> Does not support the /x parameter. Supports the use of wildcards.



Entering a MeSH search directly in search manager

Users familiar with MeSH headings can now directly enter a MeSH term(s) using the Search Manager Tab. The syntax supports the searching of one or more MeSH terms, turning on and off term explosion, applying a qualifier, and searching using a Major concept(s) only.

MeSH Search	Syntax	Notes
BASIC EXAMPLE Specify a MeSH heading	[mh cholesteatoma] [mh "diabetes mellitus"]	If searching phrase, put term in quotes.
EXPLODE A TERM Specifying that all trees for MeSH heading should be exploded	[mh cholesteatoma]	Term explosion occurs by default
SEARCH A TERM WITHOUT EXPLOSION Specifying trees for MeSH heading should not be exploded	[mh ^cholesteatoma]	Use ^ in front of the term to turn off term explosion
LIMIT BY QUALIFIERS (with term explosion) Specifying a MeSH heading with one or more qualifiers (with explosion)	[mh "cholesteatoma, middle ear"/BL,CO]	Use / and the 2 letter qualifier abbreviation to limit by one or more qualifiers. This example limits term to qualifiers BL (Blood) or CO (Complications)
LIMIT BY QUALIFIERS (without term explosion) Specifying a MeSH heading with one or more qualifiers (without explosion)	[mh ^"cholesteatoma, middle ear"/BL,CO]	Use / and the 2 letter qualifier abbreviation to limit by one or more qualifiers. Qualifiers must be keyed in upper case. This example limits term to qualifiers BL (Blood) or CO (Complications)
SPECIFYING A QUALIFIER ONLY Search for any articles using a specific qualifier	[mh /DT]	If qualifiers are specified without a MeSH term, this will find all articles where this qualifier appears. This example finds all articles indexed with a qualifier DT (Drug Therapy)
LIMIT BY MAJOR CONCEPT Specifying a MeSH heading as a major topic of an article	[mh human[mj]/GE,GD]	[mj] is used to limit your search to "Major concepts" only
SEARCH FOR MORE THAN ONE MeSH TERM IN THE SAME LINE Specifying multiple MeSH headings and/or qualifiers in the same line	[mh cholesteatoma] and [mh "ear canal"/AB]	Search for two or more MeSH terms in the same line and combine using AND, OR, NOT. Each MeSH term should be enclosed in square brackets []

In Summary:

- [mh is used to indicate search term/string contains a MeSH heading
- Phrases MUST BE placed in quotes e.g. [mh "cholesteatoma, middle ear"]
- ^ can be placed before the MeSH heading to turn explosion OFF



Customer Training

To help you make the most of the site, take advantage of these free training resources:

Online tutorials – available 24/7

A self-paced online tutorial is available in several different languages.

<http://wileyonlinelibrary.com/training>

Free Instructor-led Web Training

Participate in live online sessions from our calendar or bespoke training on request.

<http://wileyonlinelibrary.com/tutorials>

How to Order

The *Cochrane Library* is available:

■ Online ■ On DVD ■ On mobile platforms (www.skyscape.com/cochrane)

Institutional customers:

Contact your Account Manager for more details on this subscription option or e-mail:

cs-cochrane@wiley.com

Additionally, institutional customers can choose a Basic Access Licence (BAL)

– one site access for one concurrent user.

Individual customers:

Individual licences available for use from a private address by one person only.

Payment for this option must be by personal cheque or credit card.

To place your order:

By Phone: Phone your credit card order to +44 (0)1865 476722

By E-mail: cs-cochrane@wiley.com

More Information

For more information on The Cochrane Library, including information on the Cochrane Book Series, co-published journals, and peripheral products, please visit our website.



COCHRANE CLINICAL ANSWERS

www.thecochranelibrary.com