

# ProQuest Dissertations & Theses Citation Index

## Preprint Citation Index

Noiembrie 2023



**Adriana Filip**

Senior Manager  
Customer Success Consulting

[Adriana.Filip@clarivate.com](mailto:Adriana.Filip@clarivate.com)

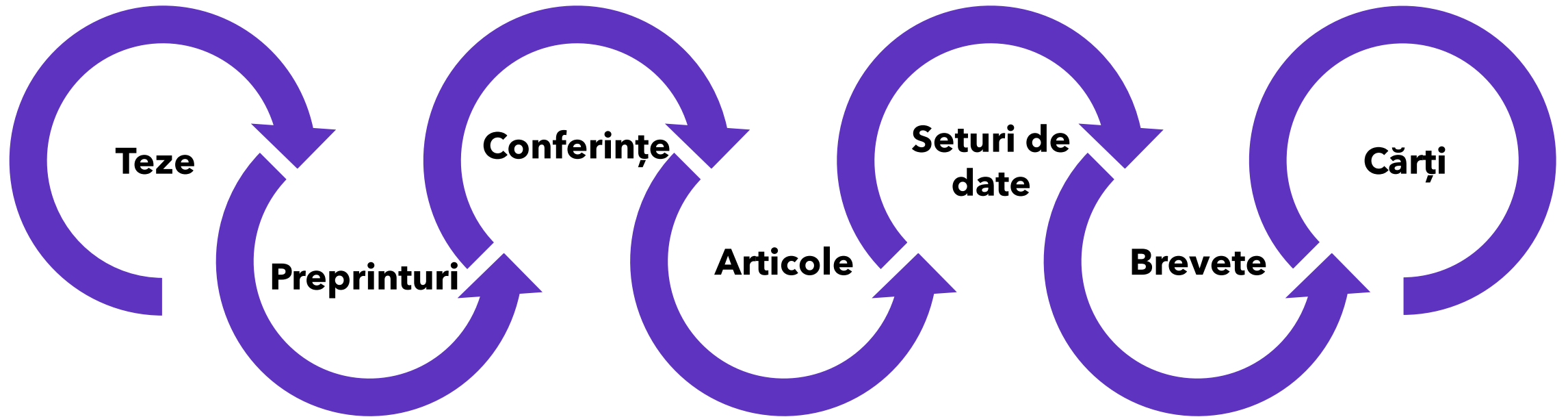
# Platforma Web of Science



Monitorizarea diverselor rezultate pentru noi descoperiri, parteneri potențiali, subiecte de actualitate și oportunități comerciale.

- 208 milioane înregistrări
- 2,4 miliarde referințe
- 34.500 reviste
- 254 categorii
- 5,5 milioane teze
- 2 milioane preprinturi
- 113 milioane brevete
- 15 milioane seturi de date

# Platforma Web of Science



# Preprint Citation Index

**Preprint**

1 **Necessity of COVID-19 Vaccination in Persons Who Have Already Had COVID-19** 4 Citations

[N. K. Shrestha](#); [P. C. Burke](#); (...); [S. M. Gordon](#)  
Apr 01 2022 | medRxiv | Total Versions: 1

Background.&nbsp;The purpose of this study was to evaluate the necessity of COVID-19 vaccination in persons with prior COVID-19. Methods.&nbsp;Employees of Cleveland Clinic working in Ohio on Dec 16, 2020, the day COVID-19 vaccination was started, were included. Anyone who tested positive for COVID-19 at least once before the study start date was considered previously infected ... [Show more](#)

[View Full Text At Repository](#) [View Published Journal Article](#) [...](#) [Related records ?](#)

**Preprint** *This article is a preprint and has not been formally peer-reviewed. It should not be regarded as conclusive, used to guide clinical or health related decisions, or be reported in news media as established information.*

**Necessity of COVID-19 Vaccination in Persons Who Have Already Had COVID-19**

By: [N. K. Shrestha](#) ([N. K. Shrestha](#)) [[5](#)], [[1](#)]; [P. C. Burke](#) ([P. C. Burke](#)) [[2](#)]; [A. S. Nowacki](#) ([A. S. Nowacki](#)) [[3](#)]; [P. Terpeluk](#) ([P. Terpeluk](#)) [[4](#)]; [S. M. Gordon](#) ([S. M. Gordon](#)) [[1](#)]  
medRxiv  
DOI: 10.1101/2021.06.01.21258176  
Published: Apr 01 2022  
Indexed: 2022-11-23  
Document Type: preprint

Version History:

Publication date	External link
1 2022-04-01	<a href="https://www.medrxiv.org/content/10.1101/2021.06.01.21258176v4">https://www.medrxiv.org/content/10.1101/2021.06.01.21258176v4</a>

Version History

**Citation Network**

In Preprint Citation Index

**1**  
Citing Preprint

[Create citation alert](#)

**4** Times Cited in All Databases **18** Cited References [View Related Records](#)

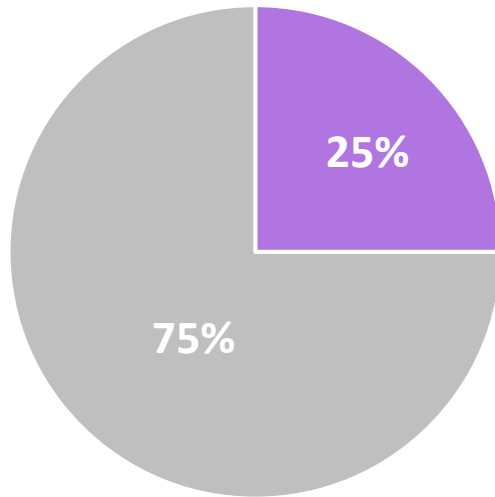
[+ See more times cited](#)  
[View citing preprints](#)

You may also like...

O colecție de peste 2 milioane de preprinturi din principalele depozite: arXiv, bioRxiv, medRxiv, ChemRxiv și Preprints.org.

- ✓ Localizarea rapidă a celor mai recente descoperiri pe un anumit subiect
- ✓ Evaluarea calității preprinturilor și o mai bună înțelegere a locului acestora în ecosistemul științific.
- ✓ Urmărirea evoluției unei idei de la primele constatări până la publicare.

# ProQuest Dissertations & Theses Citation Index



## Accesul la o colecție de cercetări ale absolvenților disponibile doar în PQDT

Un studiu privind disertațiile în psihologie a constatat că doar 25%\* se transformă în articole publicate în reviste. Această integrare deschide descoperirea de lucrări nepublicate care nu sunt disponibile în prezent pe platforma Web of Science.

## Descoperirea oportunităților ascunse pentru a avansa cercetarea

- Identificarea domeniilor emergente și a programelor de studii postuniversitare care sunt implicate în aceste cercetări.
- Înțelegerea evoluției unui subiect prin stabilirea de conexiuni între cercetarea la începutul carierei, cea emergentă și cea consolidată.
- Explorarea detaliilor metodologiilor de cercetare care nu sunt publicate în literatura de specialitate.
- Analiza literaturii de specialitate mai cuprinzătoare prin includerea unor studii nepublicate și a unor perspective diverse.

# Simplificarea cercetării la scară largă cu Web of Science APIs

## Exemple de utilizare a Web of Science API

- Cartografierea și analiza colaborării
- Evaluarea dinamicii cercetării în cadrul și între domenii
- Identificarea tendințelor emergente în cercetare

Datele ProQuest Dissertations & Theses Citation Index și Preprint Citation Index pot fi preluate prin intermediul API-urilor Web of Science.

The image shows a code editor window with a JSON response from a Web of Science API. The JSON structure is as follows:

```
1  {
2    "Data": {
3      "Records": {
4        "records": {
5          "REC": [
6            {
7              "UID": "PPRN:35898666",
8              "static_data": {
9                "summary": {
10                 "pub_info": {
11                  "pubInstPGUID": "91612505224",
12                  "coverdate": "Jan_19_2023".
13                }
14              }
15            }
16          ]
17        }
18      }
19    }
20  }
```

Below the code editor, there is a form for selecting a database. The label "databaseId" is marked as "required". The description says "Database to search. WOK represents all databases." A dropdown menu is currently set to "PPRN".

At the bottom of the code editor, the following JSON snippet is visible:

```
23     "seq_no": 1,
24     "role": "author".
```

<https://developer.clarivate.com/>



# Preprint Citation Index

# Preprint Citation Index

**1991**

- Launch of the first preprint server: **arXiv**.

**2008**

- Academia.edu and ResearchGate enable wider sharing of unpublished papers

**2016**

- Open Access publisher MDPI launches **Preprints.org**

**2019**

- Cold Spring Harbor Lab, BMJ, and researchers at Yale launch **medRxiv**

**2021**

- Preprint Citation Index development starts

- Social Sciences Research Network (SSRN) founded to disseminate research more broadly

**1994**

- Cold Spring Harbor Lab launches **bioRxiv**

**2013**

- Several chemical societies jointly launch **chemRxiv**

**2017**

- COVID-19 pandemic creates greater sense of urgency for rapid data sharing

**2020**

- Launch of the Preprint Citation Index

**2022**



# Preprint Citation Index

**Preprint Citation Index** este o nouă bază de date de pe platforma Web of Science care leagă preprinturi din diverse depozite și discipline la ecosistemul de încredere Web of Science. Preprint Citation Index acoperă în prezent următoarele depozite :

- **arXiv**
- **bioRxiv**
- **medRxiv**
- **chemRxiv**
- **preprints.org**

**~2M**

înregistrări la  
lansare

**5**

depozite la  
lansare

**12+**

depozite care  
vor fi adăugate  
în 2023

**1991**

arhiva arXiv

# Conectarea preprinturilor la surse de încredere

---



## Versiunea înregistrării

Găsiți și consultați articole peer-reviewed cu linkuri de la preprinturi la înregistrările Web of Science Core Collection.

---



## Profiluri de cercetători

Extindeți viziunea asupra expertizei unui cercetător și plasați preprinturile în contextul carierei acestuia.

---



## Alerte

Primiți notificari când noi preprinturi relevante pentru activitatea dvs. sunt adăugate pe platformă sau pe un profil de cercetător.

---



## Citări

Descoperiți legăturile dintre cercetările de ultimă oră nepublicate și lucrările publicate în reviste de specialitate.

---



## Metadata standardizate

Identificați tendințele din peisajul preprinturilor cu metadata preprint complete și standardizate începând cu 2021.

# Preprint Citation Index

## **Includerea preprinturilor în Web of Science va reduce calitatea cercetării disponibile pe această platformă?**

Preprinturile nu sunt incluse în Web of Science Core Collection, ci într-o bază de date separată.

Atunci când un utilizator efectuează o căutare în All Databases, acesta are un filtru implicit care exclude preprinturile.

Preprinturile vor fi indicate în mod clar în rezultatele căutării și pe pagina înregistrării.

## **Citările din preprinturi vor fi incluse în numărul de Times Cited sau în JIF?**

Numărul de Times Cited în Web of Science Core Collection și orice indicatori derivați, cum ar fi factorul de impact al revistei sau indicatori similari, nu vor include citările din preprinturi.

**PREPRINT** *This article is a preprint and has not been formally peer-reviewed. It should not be regarded as conclusive, used to guide clinical or health related decisions, or be reported in news media as established information.*

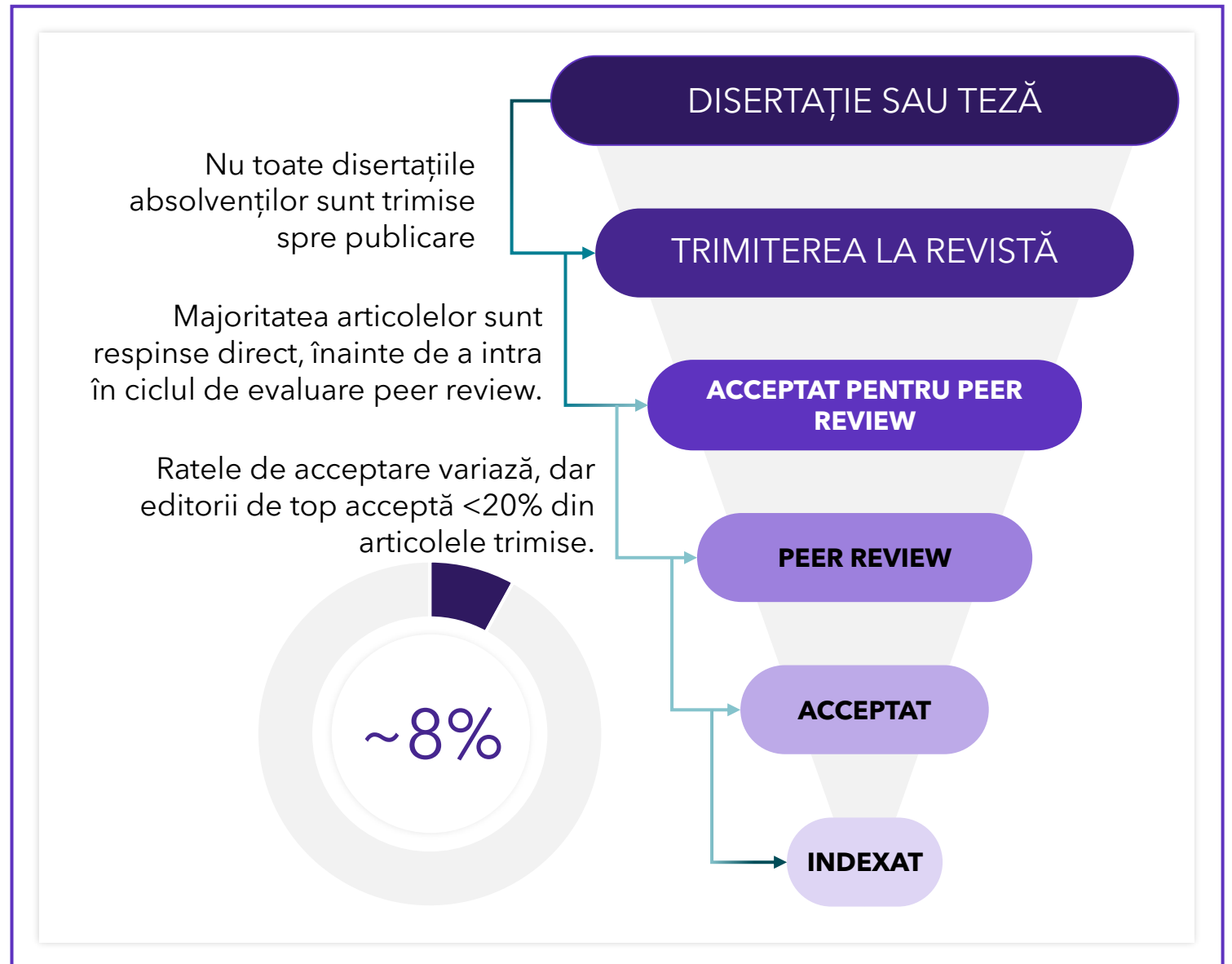
**EARLY VIRAL CLEARANCE AMONG COVID-19 PATIENTS WHEN GARGLING WITH POVIDONE-IODINE AND ESSENTIAL OILS: A PILOT CLINICAL TRIAL**

By: [A. N. K.SUGUMAR \(A. N. K.SUGUMAR\)](#); [I.ISAHAK \(I.ISAHAK\)](#); [K. K.WONG \(K. K.WONG\)](#); [M. N.ABD SAMAD \(M. N.ABD SAMAD\)](#); [N. A.MOHAMED \(N. A.MOHAMED\)](#); [N. A.ZAKARIA \(N. A.ZAKARIA\)](#); [N. E.MOHAMMAD KAZMIN \(N. E.MOHAMMAD KAZMIN\)](#); [N.BAHAROM \(N.BAHAROM\)](#); [N.KORI \(N.KORI\)](#); [P.PERIASAMY \(P.PERIASAMY\)](#); [...More](#)



# ProQuest Dissertations & Theses Citation Index

"Efectul sertarului de  
fișiere"  
O fracțiune din cercetarea  
postuniversitară este  
reprezentată în reviste de  
specialitate



# ProQuest Dissertations & Theses Citation Index

Clarivate English Products

Web of Science™ Search Adriana Filip

Return to new smart search

DOCUMENTS RESEARCHERS

Search in: ProQuest™ Dissertations & Theses Citation Index **New**

DOCUMENTS

Topic Example: oil spill\* mediterranean

View Details on ProQuest Export Add To Marked List

< 1 of 1,880 >

**The integration of coastal flooding into an arc flood data model**

By Nock, Alison Heidi (Nock, Alison Heidi)

Source University of Plymouth (United Kingdom)

Published 2014

Indexed 2023-05-23

Document Type Dissertation/Thesis

Abstract With the impact of global climate change, the speedy, intelligent and accessible dissemination of coastal flood predictions from a number of modelling tools at a range of temporal and spatial scales becomes increasingly important for policy decision makers. This thesis provides a novel approach to integrate the coastal flood data into an ArcFLOOD

Citation Network

In All Databases

Create citation alert

Use in Web of Science

0 0

Last 180 Days Since 2013

Learn more →

- Descoperiți peste 5,5 milioane de înregistrări din ProQuest Dissertations & Theses Global într-un index individual.
- Documente de la peste 4.000 de universități din peste 60 de țări din întreaga lume.

Indexarea *Cited References* și *Times Cited* (Citation Network) va fi disponibilă pentru a conecta disertațiile și tezele la rețeaua Web of Science.

# ProQuest Dissertations & Theses Citation Index

Clarivate English Products

Web of Science™ Search Sign In Register

Advanced Search > Results for DG=(doctoral)

4,508,201 results from ProQuest™ Dissertations & Theses Citation Index for:

Q DG=(doctoral) Analyze Results Create Alert

Copy query link

Refine results

Search within topic...

Publication Years

Degree Type

Dissertation and Thesis Subjects

Institution

Countries/Regions

Languages

Research Areas

- Education Educational Research 540,518
- Engineering 401,585
- Chemistry 267,674
- Psychology 231,286
- Biochemistry Molecular Biology 171,767

See all >

For more options, use Analyze Results

0/4,508,201 Add To Marked List Export Sort by: Relevance 1 of 2,000

1 **Dissertation or Thesis**  
Narrative Therapy with Asian Adoptees: A Critical Literature Analysis  
[Ling, Bethany M.](#)  
2025 | Fuller Theological Seminary  
This study critically analyzed the literature on Asian adoptees within the United States and the complex challenges they face through the lens of narrative therapy, a clinical therapeutic model developed by Michael White (2007). Narrative therapy focuses on the dominant narrative being told and lived out by an individual and how that narrative may not be congruent with the individual's internal ... Show more  
[View Full Text on ProQuest](#) ...

2 **Dissertation or Thesis**  
The Relationship between Orthorexia in College Students and Availability of Dining Options  
[Steele, Briana](#)  
2025 | Carlow University  
Due to the growing trend of healthy eating, concerns of disordered eating patterns have increased. In particular, orthorexia has gained interest due to taking the healthy eating trend too far. As college student populations tend to have a high prevalence of disordered eating, it becomes logical to examine factors contributing to development and maintenance of these patterns. For instance, how d ... Show more  
[View Full Text on ProQuest](#) ...

3 **Dissertation or Thesis**  
Pediatric Deaths in the Hispanic Population: An 11-Year Study  
[Anes, Teresa Marie](#)  
2024 | Alliant International University  
This dissertation study aimed to raise awareness of the poor pediatric health outcomes of Hispanic children throughout the cities of California, resulting in death. The study further reviews Hispanic historical events and experiences suffered within the United States. A sample of 556 pediatric decedents of archival data was obtained from the Pediatric Death Review Committee (PDRC) files ranzine ... Show more

- Descoperiți cercetări multidisciplinare în cadrul fluxului de lucru Web of Science.
- Creați alerte pentru a fi la curent cu cercetările emergente în disciplina dvs.
- Identificați instituțiile globale cu programe de cercetare care contribuie la progresul unui domeniu de cercetare.
- **Abonații ProQuest Dissertations & Theses Global beneficiază de acces la disertații și teze în text integral pe platforma ProQuest.**

# ProQuest Dissertations & Theses

The screenshot displays the ProQuest interface. At the top, the 'Web of Science' logo and search bar are visible. Below, a search result is shown for the dissertation 'Distribution, ontogenetic profile, and anti-predator efficacy of tetrodotoxin in two species of blue-ringed octopuses (*Hapalochlaena lunulata* and *H. fasciata*)' by Becky Lynn Williams. The interface includes a 'View Full Text on ProQuest' button, a search bar, and a list of similar dissertations. The main content area shows the title, author, and degree information.

View Full Text on ProQuest

ProQuest

Enter search terms...

Distribution, ontogenetic profile, and anti-predator efficacy of tetrodotoxin in two species of blue-ringed octopuses (*Hapalochlaena lunulata* and *H. fasciata*)

by

Becky Lynn Williams

B.S. (Utah State University) 1999  
M.S. (Utah State University) 2003

A dissertation submitted in partial satisfaction of the requirements for the degree of

Doctor of Philosophy

in

Integrative Biology

in the

Graduate Division

Similar Dissertations

- Presence and function of tetrodotoxin in terrestrial vertebrates and invertebrates. Stokes, Amber N. Utah State University, 2013.
- Transmissibility and Localization of Tetrodotoxin in the Rough-Skinned Newt, *Taricha granulosa*. Wegener, Sarah. Michigan State University, 2017.
- Mechanisms of Tetrodotoxin Production and Resistance in the Poisonous Rough-Skinned Newt. Vaelli, Patic M. Michigan State University, 2019.
- Sex-biased predation on *Taricha* by a novel predator in Annapel State Park. Brouillette, Amber N. Utah State University, 2008.

Foundational Research on this topic

- Tetrodotoxin levels in eggs of the rough-skin newt, *Taricha granulosa*, are correlated with female toxicity. Haniffa, Charles T. (a); Brodie, Edmund D., Jr. Journal of Chemical Ecology Vol. 29, Iss. 8, (August 2003): 1729-1739.
- Tarichatoxin-tetrodotoxin: a potent neurotoxin. Mosher, H. S. Science Vol. 144, (1964): 1100-1110.
- A predictive model to estimate total skin tetrodotoxin in the newt *Taricha granulosa*. Haniffa, Charles T. (a); Brodie, Edmund D., Jr.; Brodie Jr, Edmund D. Toxicon Vol. 43, Iss. 3, (March 1 2004): 243-249.
- Investigations on the skin toxin of the red-spotted newt, *Notophthalmus viridescens viridescens*. Brodie, E. B. Am. Midl. Nat. Vol. 80, (1968): 276-280.
- The Evolutionary Response Of Predators To Dangerous Prey: Hotspots And Coldspots In The Geographic Mosaic Of Coevolution Between Garter Snakes And Newts. Brodie, ED; Ridenhour, B. J. Evolution Vol. 56, Iss. 10, (Oct 2002): 2067-2082.
- Tetrodotoxin - Distribution and Accumulation in Aquatic Organisms, and Cases of Human Intoxication. Naguchi, Tamac; Arakawa, Osamu. Marine Drugs Vol. 6, Iss. 2, (Mar 2008): 220-242.
- Tetrodotoxin Resistance in Garter Snakes: An Evolutionary Response of Predators to Dangerous Prey. Brodie, Edmund D, III; Brodie, Edmund D, Jr. Evolution: Th. Louisiana Vol. 44, Iss. 3, (May 1990): 651.

- Citiți sau descărcați textul integral al înregistrării.
- Profitați de funcțiile PQDT Global disponibile pe platforma ProQuest, care oferă o sursă suplimentară de cercetare fundamentală, inclusiv cărți, articole din reviste sau alte surse academice.
- Cercetătorii pot identifica rapid alte disertații asemănătoare pe tema de interes.
- Conectați valoarea Web of Science cu conținutul și resursele oferite de platforma ProQuest.



# ProQuest Dissertations & Theses

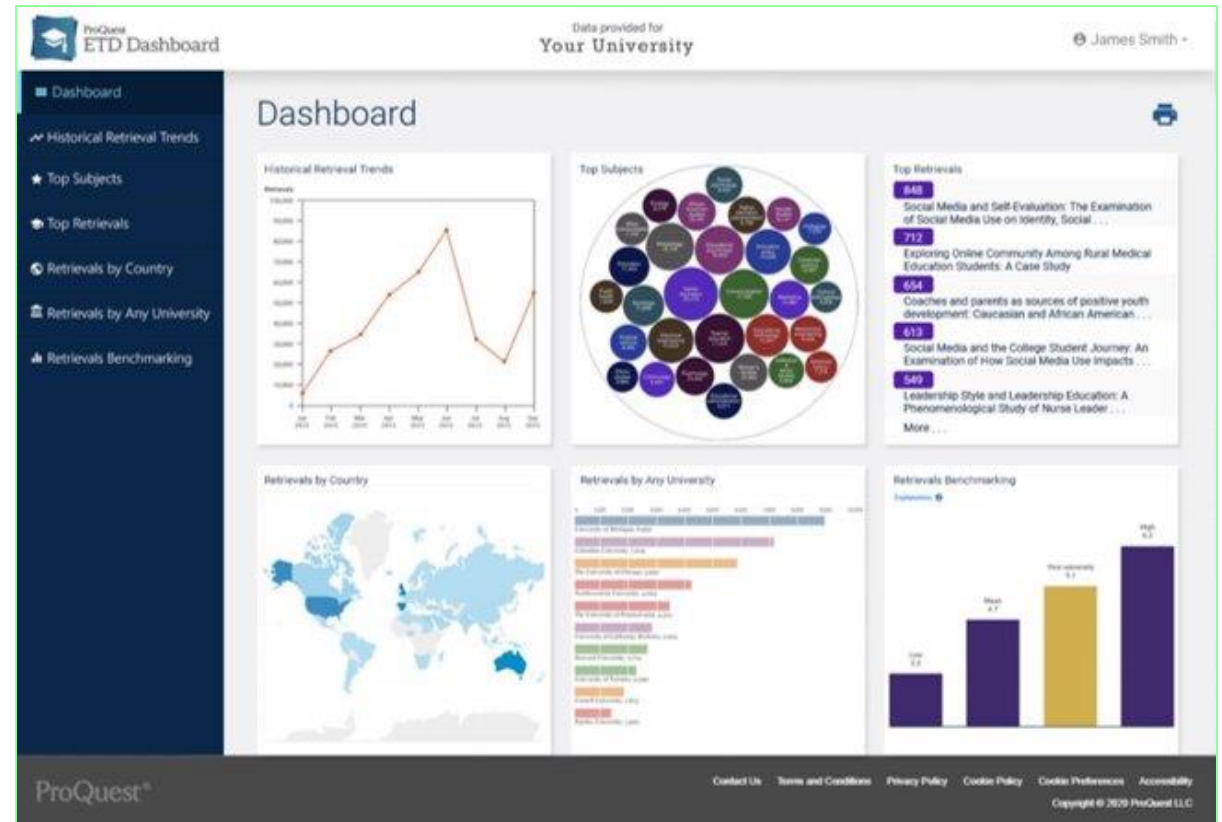
Dissertation Data Statistics	
<b>Global Database</b>	
Total Records	5,728,599
Full Text	3,309,071
Records with Abstracts	4,125,781
Records with Cited References	1,366,062
Total Cited References	164,294,887
Doctoral titles	4,709,281
Master's titles	1,019,318
<b>US Titles</b>	
Total	3,178,645
Doctoral	2,607,663
<b>International Titles</b>	
Total	2,549,954
Doctoral	2,101,618

Domeniul principal de studiu	Total titluri
Engineering	887,297
Mathematical and Physical Sciences	782,384
Education	716,868
Biological Sciences	687,991
Social Sciences	655,251
Health and Medical Sciences	570,317
Behavioral Sciences	422,490
Language and Literature	295,081
Area, Ethnic, and Gender Studies	293,522
Business	258,396
Agriculture	207,309
Philosophy and Religion	203,492
Interdisciplinary	176,090
History	174,244
Fine and Performing Arts	164,560
Geosciences	161,041
Communications and Information Sciences	129,157
Environmental Sciences	117,351
Law and Legal Studies	73,126
Ecosystem Sciences	65,274
Architecture	31,617

# Integrarea cu Web of Science amplifică impactul global al cercetării

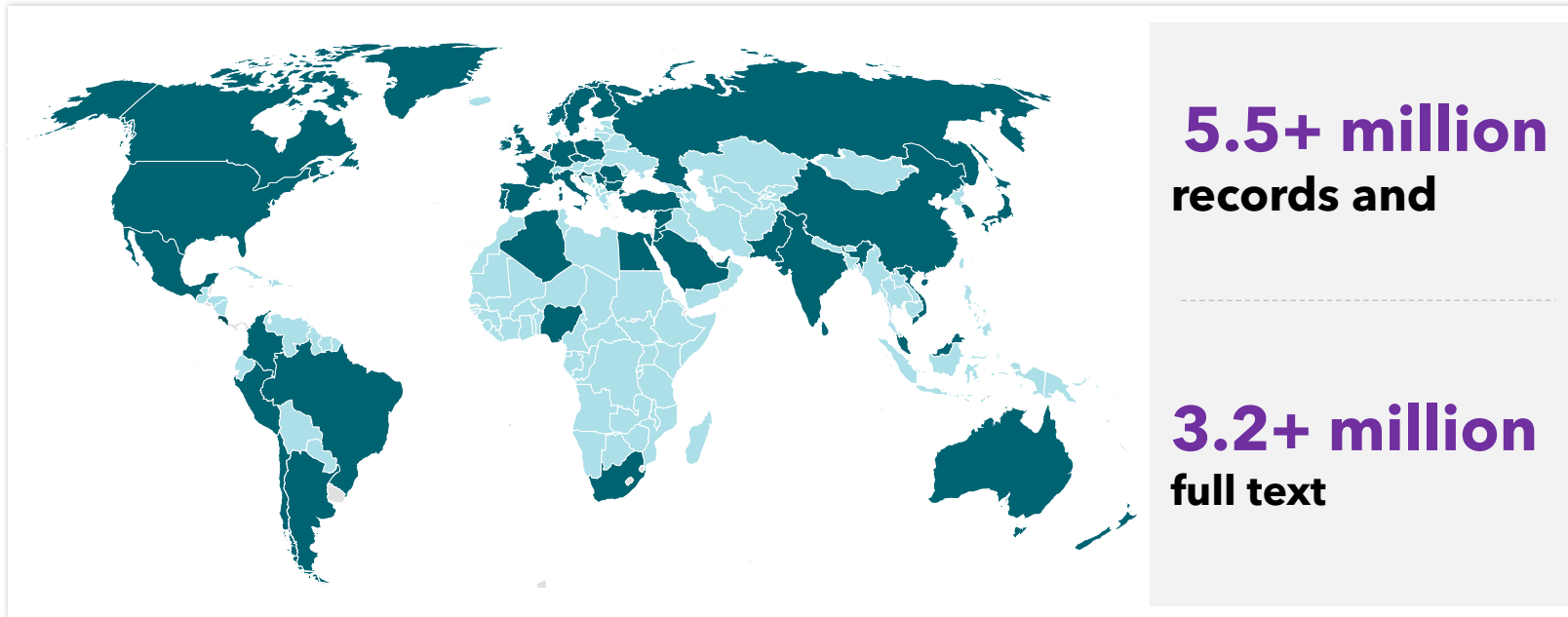
## ETD Dissemination Program

- Includeți disertațiile și tezele dvs. în ecosistemele Web of Science și ProQuest.
- Maximizați posibilitatea de descoperire a cercetărilor dvs. de către milioane de utilizatori ProQuest și Web of Science.



Contactați [academic.relations@clarivate.com](mailto:academic.relations@clarivate.com) pentru a vă înscrie

# ProQuest Dissertations & Theses Global



## Collection + Research Tools

- **Graduate students**
  - Find a unique research topic for research
  - Build discipline expertise
  - Track research trends
- **Faculty/Researchers**
  - Source for text and data mining research
  - Stay current on a topic
  - Identify emerging research

**65+**

Countries represented  
in content

**4.1K**

Universities' content  
represented

**4M**

Subscribing users

**60+**

Languages represented in  
dissertation and theses  
records

# ProQuest Dissertations & Theses Global



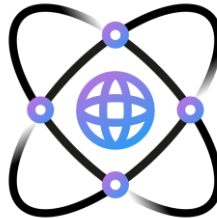
**5.5M+**  
curated  
metadata  
records



**3.2M+**  
full-text  
documents



**4,100+**  
institutions



**65+**  
countries



**60+**  
languages

**Only comprehensive,  
quality source of  
metadata, citations, and  
full-text for graduate  
theses.**

- Reviews records for accuracy and completeness
- Enhances records via additional subject indexing, keywords,
- Extracts additional metadata fields
- Extracts cited references and manually reviews to 98% accuracy
- Translates abstract and title to English for enhanced discoverability
- WoS indexing adds Research Areas, Citation Indexing and analytics



# Vă mulțumesc

**Adriana Filip**

Senior Manager, Customer Success Consulting  
Adriana.Filip@clarivate.com

## About Clarivate

Clarivate is the leading global information services provider. We connect people and organizations to intelligence they can trust to transform their perspective, their work and our world. Our subscription and technology-based solutions are coupled with deep domain expertise and cover the areas of Academia & Government, Life Sciences & Healthcare and Intellectual Property. For more information, please visit [clarivate.com](https://www.clarivate.com)

## © 2023 Clarivate

Clarivate and its logo, as well as all other trademarks used herein are trademarks of their respective owners and used under license.

## Resurse suplimentare

[Web of Science Learning](#)

[Web of Science Academy](#)

[Events & Webinars](#)

[LibGuides](#)

[Videos](#)

[Web of Science Blog](#)

[Web of Science news hub](#)

[Researcher Recognition](#)

**Serviciul clienți - disponibil 24x5**  
**[support.clarivate.com/ScientificandAcademicResearch](https://support.clarivate.com/ScientificandAcademicResearch)**



**LIVE CHAT**

Click [here](#) to reach a WoS agent



**PHONE**

Dial **+44 8003288044**



**EMAIL or  
WEBFORM**

[WoSG.support@clarivate.com](mailto:WoSG.support@clarivate.com) or click [here](#) to send us a Webform



**KNOWLEDGE  
BASE**

Click [here](#) to visit our extensive Knowledge Base