

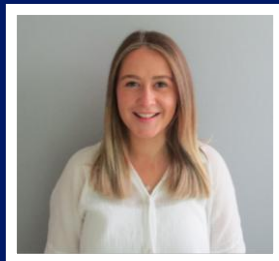


Open Access Agreement Webinar: Anelis Plus and Sage

20th March 2025



Presenting today



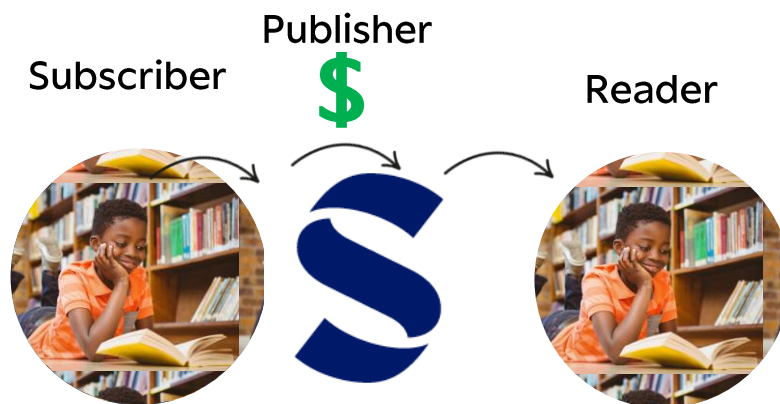
Isabel Stephenson



Today's session

1. The basics and benefits of publishing OA
2. What is an open access agreement?
3. What our agreement with Anelis Plus means for you
4. How you can check if you are eligible
5. Author workflow on Sage Journals: Licensing & Payment

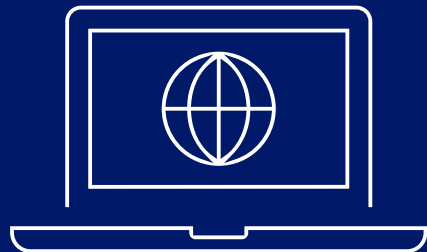
Subscription vs Open Access Models



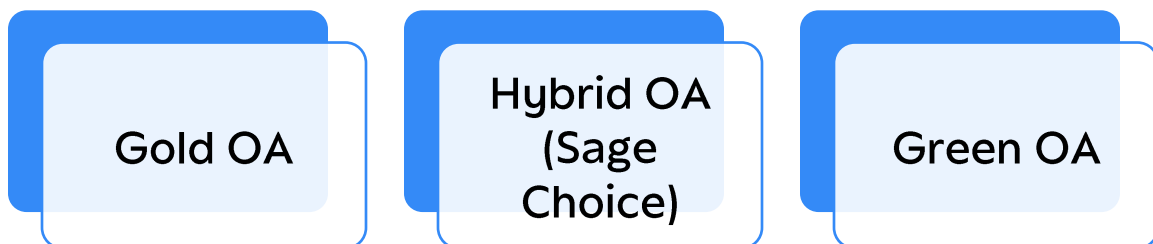


What is open access?

It is a publishing model that **makes research information freely available to readers**, as opposed to the traditional subscription model in which readers have access to scholarly information by paying a subscription (usually via libraries).



What are Sage's open access publishing options?



Article processing charges (APC)

What is it? A fee charged to enable an article to be made open access on publication.

How much? Varies by publication.

Who pays? If a funding body or the author's institution does not cover the cost, the author must pay.

When? Payable after acceptance and before publication.

What does it cover? Costs of publication, including peer review systems, copyediting, typesetting, and accessibly hosting the article online in perpetuity.



Creative Commons license

Anyone may reuse any work published under a CC license, so long as they follow the parameters of the license

- Full attribution must accompany any reuse
- CC license terms for reuse do not apply to any content (such as graphs, figures, photos, excerpts, etc.) not original to the OA article and further permission may be required from the rights holder.



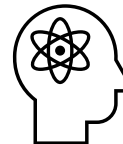
Why publish open access?



Immediate
access to
research with
no barriers



Greater
visibility and
impact



Maximizes
dissemination
& aids
progression of
scientific
discovery



Why publish open access?



Meet funder's policy requirements or other open access mandates



Retain control over rights to reuse your intellectual property



The same rigorous peer review process

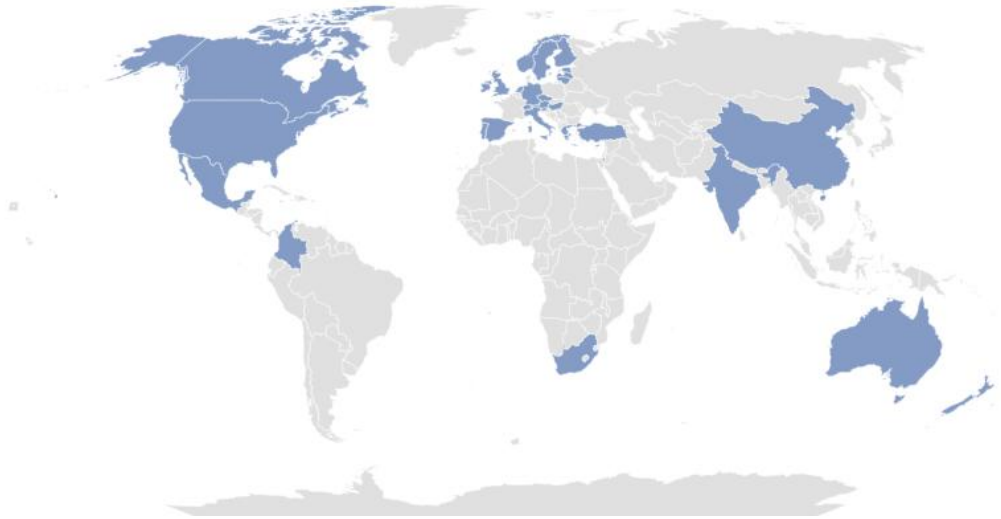


Open access at Sage

- We were a founding board member of Open Access Scholarly Publishing Association in 2008
- We launched *Sage Open*, the first broad-spectrum OA journal in the social and behavioural sciences, in 2010
- We publish over 200 "gold" open access journals
- We have 69 active open access publishing agreements with consortia around the world



Sage's open access sales agreements



What is an open access agreement?

An open access agreement is a broad term covering agreements between publishers and national governments, library consortia or individual universities so **that individual authors can publish open access at no cost to themselves or benefit from discounted article processing charges.**



What is an open access agreement?

They're based on author(s)' affiliation

They support the move to OA and cover or discount the APC cost for authors

They make articles published in subscription journals OA



What does Sage's agreement with Anelis Plus mean for you?

It means that:

- If you wish to publish in one of our 1000+ subscription journals in the Sage Premier 2025 package which offers hybrid open access publishing, you can publish your article open access, with no APC to pay.
- You can also publish free of charge in the HSS and STM journal packages.



What does Sage's agreement with Anelis Plus mean for you?

It means that you have read access to the journals in:

- Premier 2025
- Humanities and Social Sciences package
- Science Technology and Medicine package



Where can you find information about the agreement?

Anelis Plus Agreement

[Agreements](#) [Institutions](#) [Journals](#) [Process](#) [Benefits](#) [FAQs](#)

Agreement

Sage has an agreement with Anelis Plus to assist with open access article processing charges (APCs) for eligible authors.

To qualify for the agreement, the corresponding author must be affiliated with a participating Anelis Plus agreement institution and have an article accepted for publication in an [eligible journal](#) between **January 1st, 2025**, and **December 31st, 2025**.

Publish open access in a subscription journal
As a corresponding author you can publish open access in your choice of 1000+ subscription journals offering hybrid open access ([Sage Choice](#)) free of charge, with no APC to pay.

Charges other than the APC may still apply, please refer to individual journal submission guidelines.

Eligible Institutions

Check participating Anelis Plus member institutions [here](#).

Eligible Journals

Visit the Sage Journals website to discover the right journal for your research, then use the list below to check whether your chosen journal is one of the 1000+ Sage subscription journals that offer free hybrid open access publishing as part of the Anelis Plus agreement:

[2025 Sage Premier package](#)

[FIND A SAGE JOURNAL](#)

- View how long the agreement is valid for
- Explore which journals you can submit to under the agreement
- Browse the lists of 1000+ hybrid journals you can publish in for free

[Anelis Plus Agreement | SAGE Publications Ltd](#)



What do you need to keep in mind if you would like to take advantage of the agreement?

1. If you are affiliated with an eligible member institution, you must be the corresponding author

An author must be affiliated with an eligible Anelis Plus institution and be the corresponding author of the article.

Anelis Plus Agreement

[Agreement](#) [Institutions](#) [Journals](#) [Process](#) [Benefits](#) [FAQs](#)

Agreement

Participating Institution Name
Bucharest University of Economic Studies
National School of Political Studies and Public Administration - SNSPA Bucharest
Universitatea Lucian Blaga din Sibiu
University of Bucharest
University Politehnica of Bucharest
Vasile Goldis Western University of Arad
West University of Timisoara

Check participating Anelis Plus member institutions [here](#)

Eligible Journals

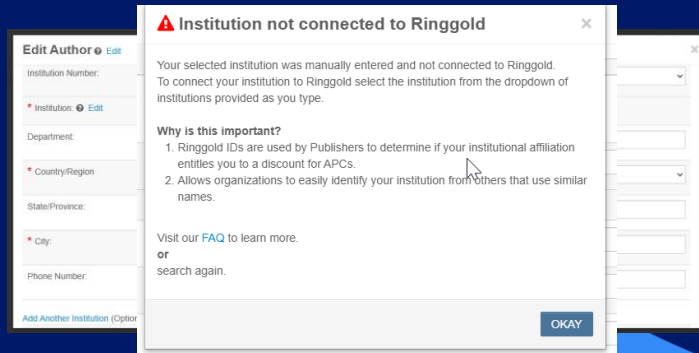
Visit the Sage Journals website to discover the right journal for your research, then use the list below to check whether your chosen journal is one of the 1000+ Sage subscription journals that offer free hybrid open access publishing as part of the Anelis Plus agreement.

[2025 Sage Premier package](#)

[FIND A SAGE JOURNAL](#)

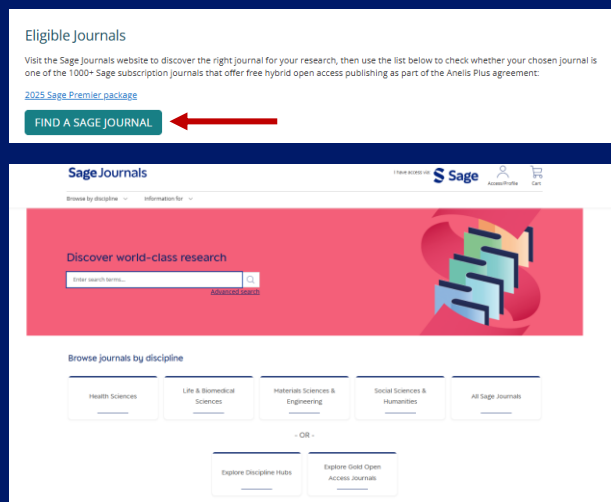
Ensuring you receive the discount

- Ensure you add your institution correctly on submission
- Validated institutions will appear in dropdown in the submission system
- The Ringgold ID is used to calculate eligible articles for the agreement discount
- Eligibility is determined by the Corresponding Author's affiliations only



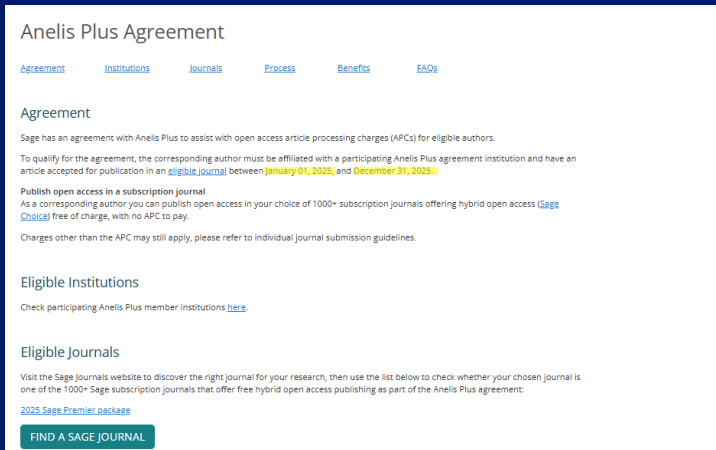
2. You must publish in a journal that is included in the agreement

You can find the full list of eligible 900+ subscription on the agreement page.



3. Your article must be accepted for publication during the period in which the agreement is valid

The agreement is currently valid between **January 01, 2025, and December 31, 2025.**



Anelis Plus Agreement

[Agreement](#) [Institutions](#) [Journals](#) [Process](#) [Benefits](#) [FAQs](#)

Agreement

Sage has an agreement with Anelis Plus to assist with open access article processing charges (APCs) for eligible authors.

To qualify for the agreement, the corresponding author must be affiliated with a participating Anelis Plus agreement institution and have an article accepted for publication in an [eligible journal](#) between **January 01, 2025, and December 31, 2025.**

Publish open access in a subscription journal
As a corresponding author you can publish open access in your choice of 1000+ subscription journals offering hybrid open access ([Sage Choice](#)) free of charge, with no APC to pay.

Charges other than the APC may still apply, please refer to individual journal submission guidelines.

Eligible Institutions

Check participating Anelis Plus member institutions [here](#).

Eligible Journals

Visit the Sage Journals website to discover the right journal for your research, then use the list below to check whether your chosen journal is one of the 1000+ Sage subscription journals that offer free hybrid open access publishing as part of the Anelis Plus agreement:

[2025 Sage Premier package](#)

FIND A SAGE JOURNAL



4. Only particular article types are eligible under the agreement

Article types included:

- ✓ *Original research papers*
- ✓ *Review papers*
- ✓ *Brief communications*
- ✓ *Short reports*
- ✓ *Case reports*

Article types that are excluded:

- ✗ *Articles published as part of commercially sponsored supplements*
- ✗ *Errata*
- ✗ *Book reviews*
- ✗ *Editorials*
- ✗ *Published abstracts*
- ✗ *Call for papers*
- ✗ *News items or similar*



6. You may have to pay an extra charge, depending on the journal you submit to

These charges include:

- Submission fees

This is a fee an author pays to submit to the journal. Paying a submission fee does not guarantee acceptance and is often introduced to cover journal and peer review costs.

- Page charges
- Colour Charges



Author Workflow

Sage Journals: Licensing & Payment is an integrated online platform that provides a single portal for authors, consortia, libraries and funders to manage open access publishing across our journals

Sage Journals LICENSING & PAYMENT

Once your article has been accepted and reaches production, it will be sent to Sage Journals Licensing and Payment

Select publishing route and sign license

Dear Example Author 42,

Congratulations on the acceptance of your paper *Your Article Title Will Appear Here* (DOI: 10.1177/10234497323251331800/ ID: QHR-2024-1139.R2).

Open access publication for your paper in **Qualitative Health Research** has been requested by Anelis Plus. Your institution is part of the Anelis Plus Consortium, which has an agreement with Sage that enables all hybrid articles by its members to be published Open Access at no cost.

No payment by you is required to make your article open access. Just select the open access publishing option via the button above to sign the open access license.

Benefits of open access:

- free to read – no subscription required
- gain high visibility and global exposure to a multidisciplinary audience
- a route to be compliant with funder and institution open access mandates

Even if you do not want to publish your article as open access, you must follow the link to accept or decline the offer and sign your license to complete the publication process. Without a signed license we cannot publish your article.

Select your publishing route and sign license

To avoid delay please complete these final steps as soon as possible.

Visit Sage Journals: Licensing & Payment to learn more and choose your publishing route.

Best wishes,

Sage

openaccess@sagepub.com

Hybrid

Sage Journals

LICENSING & PAYMENT

STG

1 Open Access Selection

2 Register/Log In

3 Sign License

4 Confirmation

Welcome to Sage Journals: Licensing & Payment

Congratulations, your article has been accepted for publication in **Qualitative Health Research**.

Open access selection

Here you can choose to make your article open access. Then, once logged in you can select your open access license.

What is open access and why choose it?

- Choosing open access will mean that your article can be read in the journal by anyone anywhere in the world without restriction.
- This may increase the number of readers of your article, encouraging collaboration and faster development in your field of research.

Why is open access available to me?

Open access for your article has been requested by **Anelis Plus**.

Your institution is part of the Anelis Plus Consortium, which has an agreement with Sage that enables all hybrid articles by its members to be published Open Access at no cost.

What is the article processing charge (APC)?

Pricing Details

	Price (GBP)
Open access article processing charge	2,933.20
Anelis Plus discount (100.00%)	-2,933.20
Total	0.00

No payment is required to make your article open access. There will be no charge to you.

*Required fields

*Would you like to make your article open access?

- ☒ Yes, make my article open access
- ☐ No, publish my article subscription

CONTINUE

If you require assistance, please contact openaccess@sagepub.com

Article Details

Article

Your Article Title Will Appear Here

DOI

10.1177/10234497323251331800

Journal

Qualitative Health Research

Journal Type

Hybrid

Authors

Example Author 42
Corresponding author
Example Author 8

[Expand All](#)

1 Choose Open Access 2 Register/Log In 3 License Selection 4 Order Confirmation

Let us know who you are

Only one of the named authors of the article may complete the next step: copyright and open access license selection.

Please select your name from the author dropdown to log in or register for an account.

Author Selection

***Required fields**
Author*

Select Author

Select Author
Example Author
Example Author

Supported Browsers

Firefox: 83 to 85 - Windows and Mac | Chrome: 86 to 88 - Windows and Mac | Microsoft Edge: 88 - Windows OS | Internet Explorer: 10.0 and 11.0 - Windows; compatibility view is not supported | Safari: 12 to 13 - Mac OS

1 Open Access Selection 2 Register/Log In 3 Sign License 4 Confirmation

Action required for publication. Please register or log in to complete the following steps:

- Process your open access decision
- Sign your open access license

Author selection and registration / log in

***Required fields**

***Author name:**
Please select your name from the dropdown:
Example Author

***Email address:**
author@example657887654@example.com
This is the email address. Sign has associated with the selected name for the article. If this is not the correct email address, please contact: press@unimed.ac.id

***Create password:**
Your password must be 8-15 characters in length:

- At least one upper case character (a-z)
- At least one lower case character (a-z)
- At least one digit (0-9)
- Cannot copy and paste

***Confirm password:**

Supported Browsers
Firefox: 83 to 85 - Windows and Mac | Chrome: 86 to 88 - Windows and Mac | Microsoft Edge: 88 - Windows OS | Internet Explorer: 10.0 and 11.0 - Windows; compatibility view is not supported | Safari: 12 to 13 - Mac OS

REGISTER

Copyright and open access license selection

This Agreement will grant to the owner(s) Sage Inc. (the 'Proprietor') of the Journal, Qualitative Health Research (the Journal title subject to verification by Sage) a commercial license to produce, publish, sell and sub-license your article ('Article') and any accompanying abstract or Supplemental Material (all materials collectively referenced as the 'Contribution'), in all languages and all formats through any medium of communication for the full legal term of copyright (and any renewals) throughout the world.


The Proprietor will publish the Contribution under the Creative Commons license selected by you below.

License Selection

*Required fields

The open access license(s) allowed by this journal are listed below. If your institutional or research funder mandate requires you to sign a different license, please contact openaccess@sagepub.com

*Please select a license

☒  [Creative Commons Attribution-NonCommercial license \(CC BY-NC 4.0\)](#)
Test Test

*Who owns the copyright of your Contribution?

- ☒ **The copyright to the Contribution is owned by you**
You represent and warrant that the copyright to the Contribution is owned by you.
- ☐ **U.S Government department work** ⓘ
You are employees of the United States Government and prepared the Contribution as part of your official duties.
- ☐ **Other Government department work (not U.S.)** ⓘ
You are employees of the Government of the country indicated in the box provided and prepared the Contribution as part of your official duties.
- ☐ **Work made for hire for employer/Work done in the course of employment (non-government)** ⓘ
The Contribution was prepared by you at the direction of your employer and within the scope of your employment and copyright in the Contribution is owned by your employer.
- ☐ **More than one of the options above applies** ⓘ

Terms & Signature

☒ I have read and accept the [Terms of the Agreement](#)

☒ I warrant that I am one of the named authors of the Contribution and that I am authorized to sign this License; in the case of a multi-authored Contribution, I am authorized to sign on behalf of all other authors of the Contribution.

Signing Author: Example Author 8

SIGN LICENSE

Sage Journals **LICENSING & PAYMENT** **STG**

1 Open Access Selection 2 Register/Log In 3 Sign License

Confirmation

- ✓ **Open access chosen**
Open access publishing route was chosen by **Example Author B**
- ✓ **Copyright and open access license signed**
The open access license was signed by **Example Author B**

Your full license and the terms of agreement will be emailed to you and all co-authors for your reference. It also specifies how your article may be reused.

[GO TO DASHBOARD](#)

This completes the **hybrid journal** open access workflow!

Articles in Progress

Title	Journal	DOI	Processing Author	License	Assigned \$0? Report	Status	Take Action Now
No article in progress							

Transacted Articles

Title	Journal	DOI	Processing Author	License	Assigned \$0? Report	Status	Take Action Now
Qualitative Health Research	Qualitative Health Research	10.1177/1049731523118180	Example Author B University of Berkeley	CC-BY-NC 4.0 Not available in dropdown	No charge fee	Ready for open access submission to Sage	Go to Sage

Open access license information for your paper

Dear Authors,

Example Author B has selected the following open access Creative Commons license for your article, on behalf of any co-authors: Creative Commons Attribution-NonCommercial license (CC BY-NC 4.0)

- Your Article Title Will Appear Here
- 10.1177/1049731523118180
- Qualitative Health Research

Attached is the full license and the terms of the agreement for your reference. It also specifies how your article may be reused.

Your paper will be published open access by Sage in **Qualitative Health Research** under the terms of this signed agreement soon.

Best wishes,

Sage

openaccess@sagepub.com

Sage Office:
Los Angeles 2455 Teller Rd Thousand Oaks, CA 91320, USA
London 1 Oliver's Yard, 55 City Road, London, EC1Y 1SP, UK, Registration No. 1017014
New Delhi D-02-1, Market Cooperative Industrial Estate, Mathura Road, Post Bag 7, New Delhi 110 044, India
Singapore 10 Robinson Road #10-101 101120, China Square Central, Singapore 101120
Washington, DC 2003 Virginia Avenue NW, Suite 400, Washington, DC, 20037, USA
Melbourne Level 20, 111 William Street Melbourne, VIC 3000, Australia

About Sage

Privacy policy

WFO 0044

Explore Sage's open editor positions and discover the benefits of joining one of our journal teams

Learn more >>

Sage Journals

Search this journal | Enter search terms... [Advanced search](#)

Access/Profile | Cart

Browse by discipline | Information for

Journal of Medical Education and Curricular Development

Impact Factor: **2.0** / 5-Year Impact Factor: **2.4** [JOURNAL HOMEPAGE](#) [SUBMIT PAPER](#)

Open access | Research article | First published online August 26, 2020

Where Does Indian Medical Education Stand Amidst a Pandemic?

[Poornaprabha Patil](#) and [Stuti Chakraborty](#) [View all authors and affiliations](#)

[All Articles](#) | <https://doi.org/10.1177/2382120520951606>

Contents | PDF / ePub | Cite article | Share options | Information, rights and permissions | Metrics and citations | Figures and tables

Abstract

The recent outbreak of COVID-19, declared a pandemic, has affected medical education globally. The scenario is no different for medical students in India as they find themselves at a crossroads in their careers, with clinical and elective postings called off. Missing out on the opportunity to learn from "first-hand" clinical observation stands to threaten the quality of medical education and learning procured by Indian medical students which is extremely essential to deal with the vast patient load that awaits them in their impending future as healthcare professionals. Is the Indian medical education system being able to cope with the challenges imposed by the increasing burden of COVID-19? The authors propose few administrative and on-ground interventions that must seek to work collectively with all government and private medical institutions in order to help students/interns and residents in coping with stress, anxiety or academic losses incurred due to the pandemic.

Introductory Open Access Resources

Browse now >>

Similar articles:

Restricted access

[The Evolution of Medicine](#)

Complete the Open Access process for your article now

Dear Example Author 42,

Congratulations on the acceptance of your paper *Your Article Title Will Appear Here* (DOI: 10.1177/1023449447323251331800/ ID: TAH-2024-1139.R2) in *Therapeutic Advances in Hematology*.

Therapeutic Advances in Hematology is a Gold Open Access Journal, in which all papers are made freely available and published with an Open Access license. In order to proceed with the publication of your article, you need to select the appropriate OA license type.

Select license type

Please note, to proceed with publication, an article processing charge (APC) is payable by you or a bill payer of your choice: 1,851.75 GBP (subject to tax where applicable). No production work will begin on your paper until the Open Access steps have been completed. To avoid delay, please complete the steps as soon as possible.

Sage Journals: Licensing & Payments to learn more and choose your license.

Best wishes,

Sage

openaccess@sagepub.com

Gold

1
Open Access Summary2
Register/Log In3
Sign License

Welcome to Sage Journals: Licensing & Payment

Your article has been accepted for publication in Therapeutic Advances in Hematology. In order to proceed with publication, an article processing charge (APC) must now be paid.

Please review and confirm the pricing details below.

You will then be able to pay the APC yourself, or nominate another person or organization to pay it on your behalf.

What is the article processing charge (APC)?

Pricing Details	Price (GBP)
Open access article processing charge	1,851.75
Subtotal (Tax will be calculated once billing details are completed)	1,851.75

[Apply PromoCode](#)

CONTINUE

Copyright and open access license selection

This Agreement will grant to the owner(s) Sage Ltd. (the 'Proprietor') of the journal, Therapeutic Advances in Hematology (the journal title subject to verification by Sage) a commercial license to produce, publish, sell and sub-license your article (Article) and any accompanying abstract or Supplemental Material (all materials collectively referenced as the 'Contribution'), in all languages and all formats through any medium of communication for the full legal term of copyright (and any renewals) throughout the world.

The Proprietor will publish the Contribution under the Creative Commons license selected by you below.

License Selection

*Required fields

The open access license(s) allowed by this journal are listed below. If your institutional or research funder mandate requires you to sign a different license, please contact goopenaccess@sagepub.com

*Please select a license

☒ **Open Access** Creative Commons Attribution-NonCommercial license (CC BY-NC 4.0)
Test Test

*Who owns the copyright of your Contribution?

☒ The copyright to the Contribution is owned by you
You represent and warrant that the copyright to the Contribution is owned by you.

☐ U.S Government department work ⓘ
You are employees of the United States Government and prepared the Contribution as part of your official duties.

☐ Other Government department work (not U.S.) ⓘ
You are employees of the Government of the country indicated in the box provided and prepared the Contribution as part of your official duties.

☐ Work made for hire for employer/Work done in the course of employment (non government) ⓘ
The Contribution was prepared by you at the direction of your employer and within the scope of your employment and copyright in the Contribution is owned by your employer.

☐ More than one of the options above applies ⓘ

Terms & Signature

☒ I have read and accept the [Terms of the Agreement](#)

☒ I warrant that I am one of the named authors of the Contribution and that I am authorized to sign this License; in the case of a multi-authored Contribution, I am authorized to sign on behalf of all other authors of the Contribution.

Signing Author: Example Author 42

SIGN LICENSE



Assign APC payer

What is the article processing charge (APC)?

Pricing Details	Price (GBP)
Open access article processing charge	1,851.75
Subtotal <i>(Tax will be calculated once billing details are completed)</i>	1,851.75

[Apply PromoCode](#)

*Required fields

*Who will pay the APC?

Select bill payer:

- ☐ Choose a different bill payer ①
- ☐ I am the bill payer

CONFIRM BILL PAYER

Billing Details

Purchase Order Number

Purchase Order Number

VAT ID

VAT ID

Note to appear on invoice

Note to appear on invoice

75 remaining

BACK

PREVIEW INVOICE

Bucharest

*Zip code/Postcode

030018

*Phone Number

40


213077300

Billing Details

Purchase Order Number

Purchase Order Number

FINAL INVOICE

 Sage Publications Ltd. 1 Oliver's Yard, 55 City Road London EC1Y 1SP, UK UK VAT ID: GB410935047		Invoice No. S0A25L T000067 Invoice Date. 20 March 2025 Payment Due By 19 April 2025 Customer Account No. SBP0083673
--------------------------------------------------------------------------------------------------------------------------------------------------------------------------------------------	--	----------------------------------------------------------------------------------------------------------------------------------------------------------

Article Details Title Your Article Title Will Appear Here DOI 10.1177/102344944732125131800 Publication Therapeutic Advances in Hematology (L040) License CC BY-NC 4.0 Peer Review Submission Date 10 March 2025 Peer Review Acceptance Date 10 March 2025	Bill To Example Author 42 Bucharest University of Economic Studies Address Line 1 Bucharest 030018, Romania author@example5678876541@example.com (40)213077300
-------------------------------------------------------------------------------------------------------------------------------------------------------------------------------------------------------------------------------------------------------------------------------------------------------------------------------	---------------------------------------------------------------------------------------------------------------------------------------------------------------------------------------------------

Order Details Open Access Article Processing Charge 1,851.75 Subtotal 1,851.75 UK VAT (0%) 0.00 Total Amount Payable in GBP 1,851.75	Price (GBP) 1,851.75 1,851.75 0.00 1,851.75
-----------------------------------------------------------------------------------------------------------------------------------------------------------------------	----------------------------------------------------------------

Payment Instructions

By Credit/Debit Card Pay Online or click PAY NOW button provided in the Invoice Notification email to make online payment via the secured payment gateway. Major Credit/Debit cards (Visa, Mastercard) are accepted for payment.	Direct Bank Credit Transfer Bank Name: J.P. Morgan Chase Bank, N.A. Bank Address: London Branch, 25 Bank Street, Canary Wharf, London E14 5JP Account Number: 0076975604 Sort Code: 60-92-42 IBAN Number: GB608314560924276975604 BIC / SWIFT Code: CHASGB33 Email ID: openaccess@sagepub.com	Notes <ul style="list-style-type: none"> Please include invoice number in bank transaction for reference. 20 GBP must be added when paying by bank transfer to cover bank fees. Payment must be made in GBP, as denoted on the invoice.
---------------------------------------------------------------------------------------------------------------------------------------------------------------------------------------------------------------------------------------------------------------	----------------------------------------------------------------------------------------------------------------------------------------------------------------------------------------------------------------------------------------------------------------------------------------------------------------------------------------------------------------------------	------------------------------------------------------------------------------------------------------------------------------------------------------------------------------------------------------------------------------------------------------------------------------------

Authors * corresponding author Example Author 42* Example Author 8	Author Affiliation Bucharest University of Economic Studies University of Bucharest	ORCID 0000-0002-6937-9393 None declared
---------------------------------------------------------------------------------	--------------------------------------------------------------------------------------------------	------------------------------------------------------

Open Funder Name Example Funder Name	Grant ID -
------------------------------------------------	----------------------

If you have any questions concerning this invoice, please contact openaccess@sagepub.com

Page 1 of 1


Sage Journals LICENSING & PAYMENT

After you have made your payment by credit card, a paid invoice receipt will be sent to your registered email address for your records.

Sage Payment Page

First Name :	<input type="text" value="Example"/>	Transaction ID :	<input type="text" value="B000039160"/>
Last Name :	<input type="text" value="Author 42"/>	Street :	<input type="text" value="Address Line 1"/>
Email address :	<input type="text" value="author@example5678876541@example.com"/>	Town/City :	<input type="text" value="Bucharest"/>
Amount :	<input type="text" value="1,851.75"/>	County/State :	<input type="text" value="Bucharest"/>
		Postalcode/Zip :	<input type="text" value="030018"/>
		Country :	<input type="text" value="Romania"/>
		Currency :	<input type="text" value="GBP"/>

Please do not use your browser's refresh or back buttons.

Brand Visa 

Card Number	Expiry Date
<input type="text" value="Card Number"/>	<input type="text" value="MM / YY"/>
Card holder	CVV
<input type="text" value="Card holder"/>	<input type="text" value="CVV"/>

Pay now

Cancel

Explore Sage's open editor positions and discover the benefits of joining one of our journal teams [Learn more >>](#)

Sage Journals Search this journal Enter search terms... [Advanced search](#) [Access/Profile](#) [Cart](#)

Browse by discipline Information for

Journal of Medical Education and Curricular Development

Impact Factor: 2.0 / 5-Year Impact Factor: 2.4 [JOURNAL HOMEPAGE](#) [SUBMIT PAPER](#)

Open access | Research article | First published online August 26, 2020

Where Does Indian Medical Education Stand Amidst a Pandemic?


[Poorvaarabha Patil](#) and [Stuti Chakraborty](#) [View all authors and affiliations](#)

[All Articles](#) | <https://doi.org/10.1177/2382120520951606>

[Contents](#) [PDF / ePub](#) [Cite article](#) [Share options](#) [Information, rights and permissions](#) [Metrics and citations](#) [Figures and tables](#)

Abstract

The recent outbreak of COVID-19, declared a pandemic, has affected medical education globally. The scenario is no different for medical students in India as they find themselves at a crossroads in their careers, with clinical and elective postings called off. Missing out on the opportunity to learn from "first-hand" clinical observation stands to threaten the quality of medical education and learning procured by Indian medical students which is extremely essential to deal with the vast patient load that awaits them in their impending future as healthcare professionals. Is the Indian medical education system being able to cope with the challenges imposed by the increasing burden of COVID-19? The authors propose few administrative and on-ground interventions that must seek to work collectively with all government and private medical institutions in order to help students/interns and residents in coping with stress, anxiety or academic losses incurred due to the pandemic.



Introductory Open Access Resources

[Browse now >>](#)

Similar articles:

[Restricted access](#)

The Evolution of Business

How to get help

Sage has a dedicated open access customer service team.

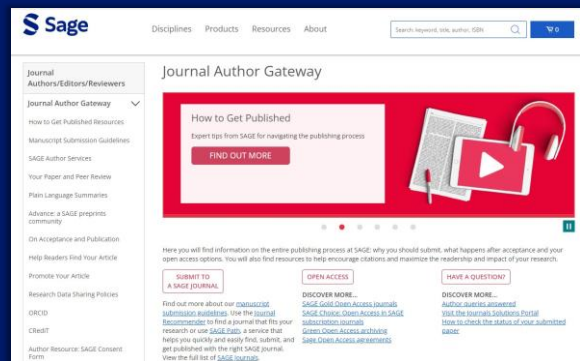
Reply to or send an email to Sage Open Access Customer Services: openaccess@sagepub.com

Sage Journal Resources

- Dedicated space for author support and services
- Visit for additional How to Get Published resources and answers to common author questions
- Learn which version of your paper you can share, where and when

View all resources here:

sagepub.com/journal-author-gateway



Frequently asked questions

How can an author ensure that they are the corresponding author, so they can take advantage of the agreement?

How can authors find out which journals are included?

Are all hybrid journal articles given the option of Sage Choice?



How to get in touch

Sage Open Access:
openaccess@sagepub.com



Q&A section